

Draft ANALYSIS OF ABEKS INTERVIEWS FOR CARIBOU 2001-2015



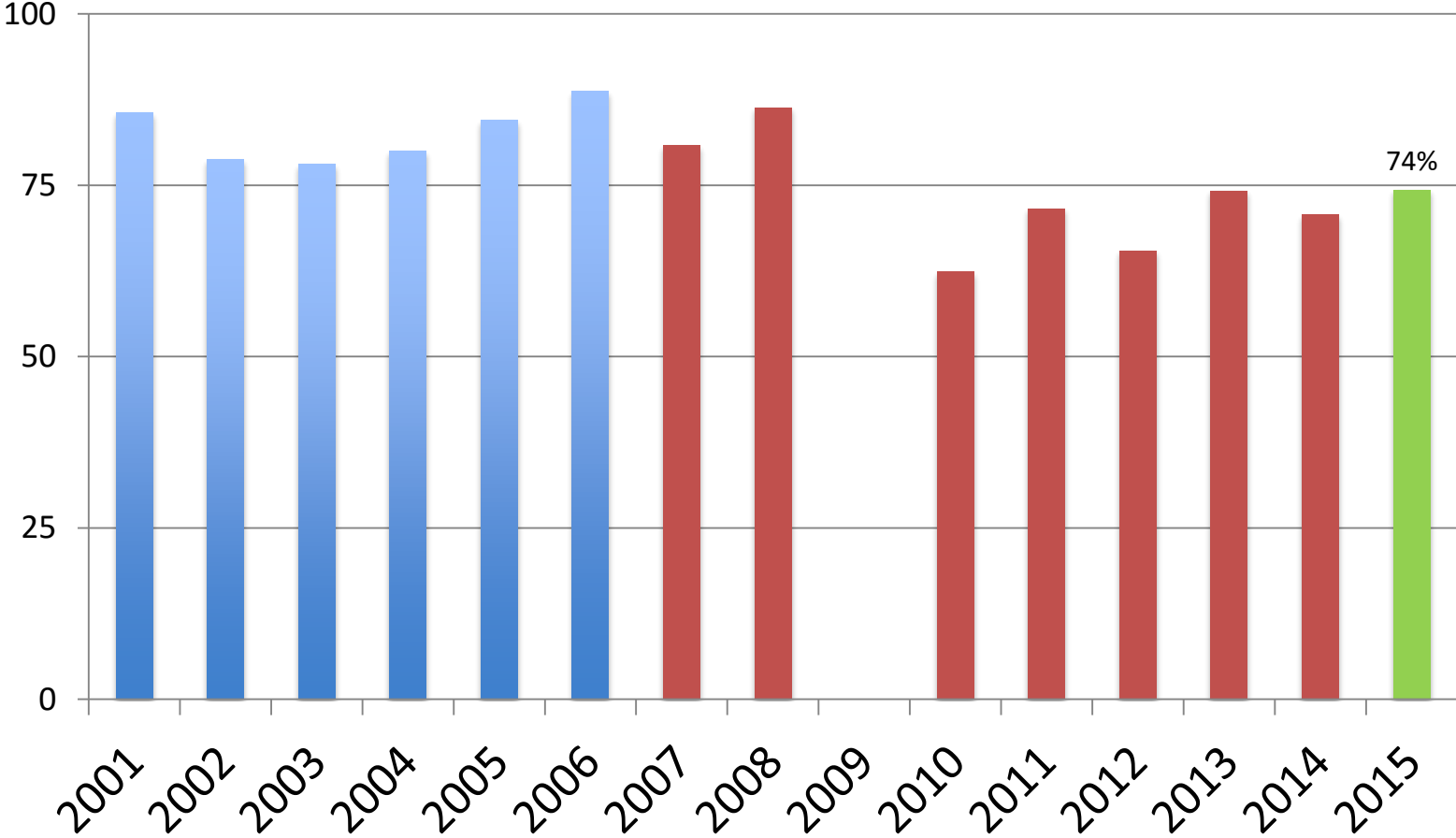
Don Russell,
Michael Svoboda,
Donna Larsen

INTRODUCTION

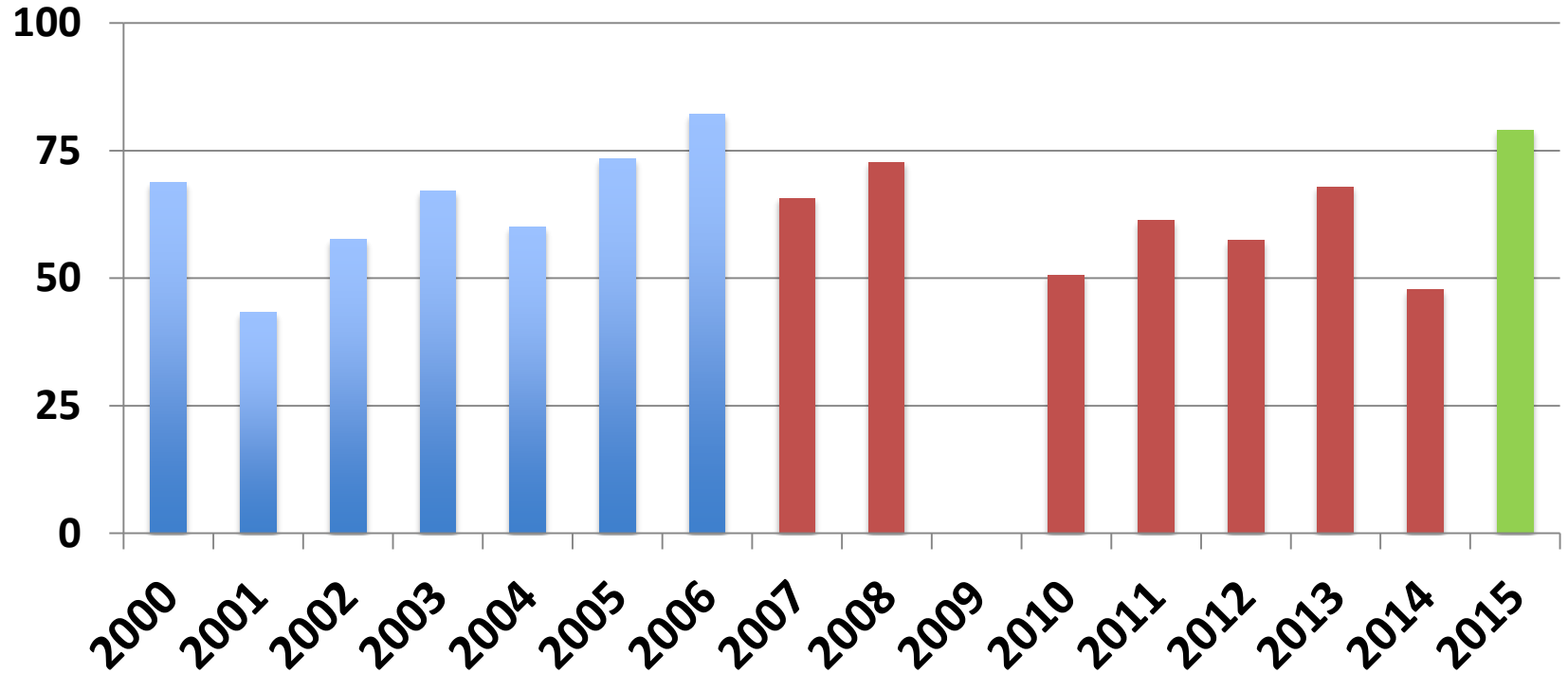
- Last analysis covered year 2000 to 2006
- Current draft analysis brings up to 2015
- PCH increased from 123,000 in 2001 to 197,000 in 2013
- Previous analysis was consistent with a population growth

** Rapid reporting timeline – data cut off last week – summaries are 8 hours old = draft.*

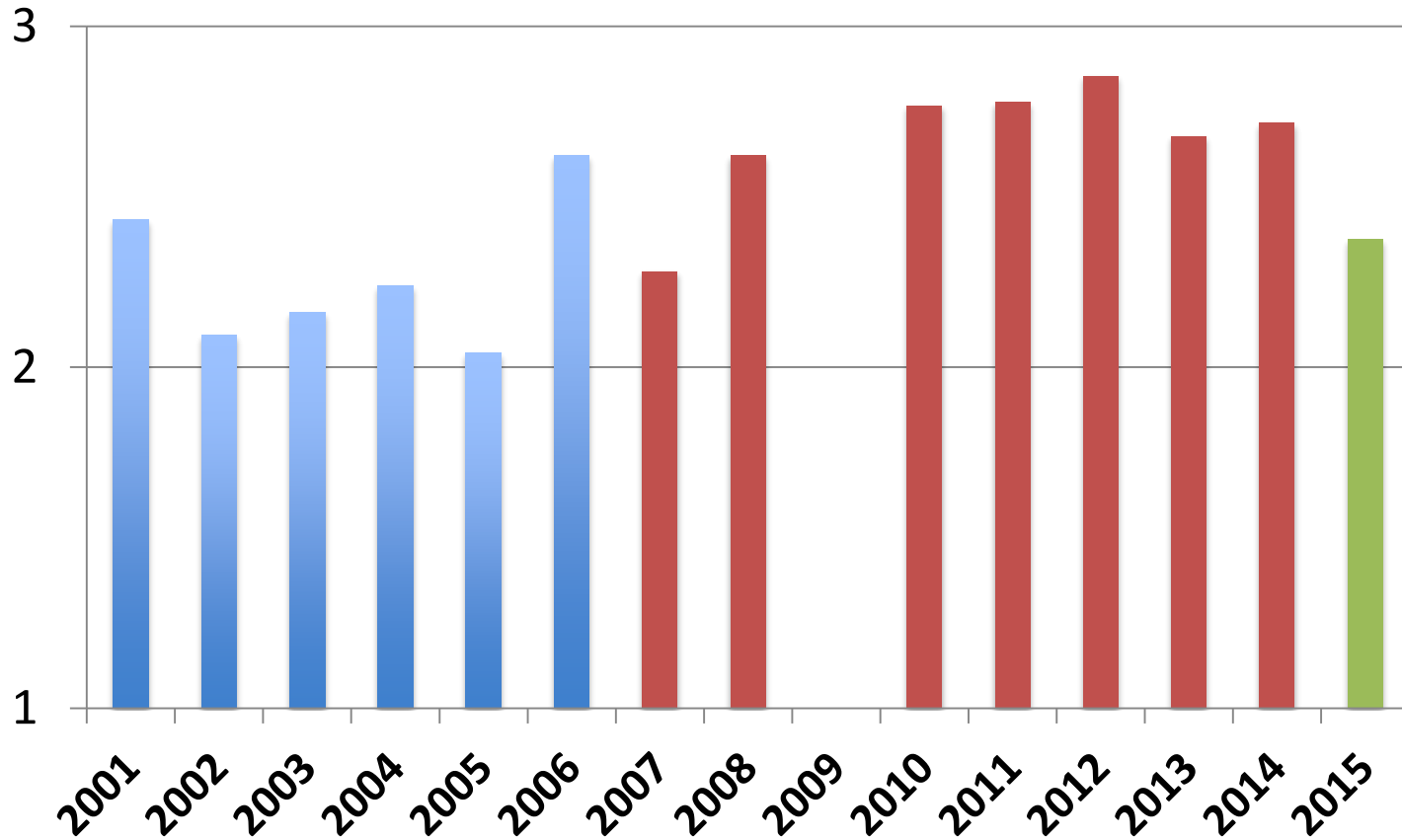
Percent of responders that hunted



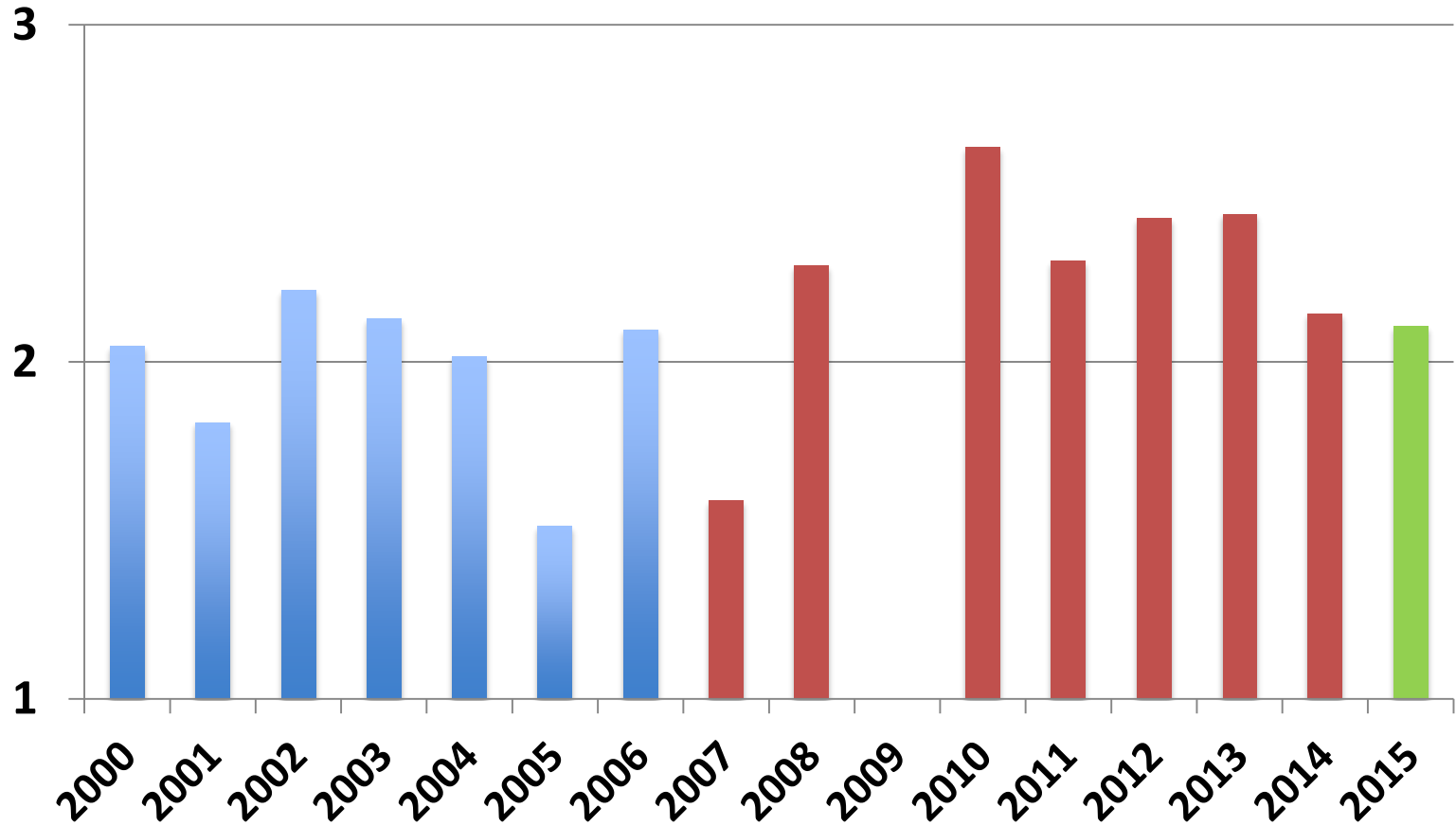
Responders who “Met their Needs”



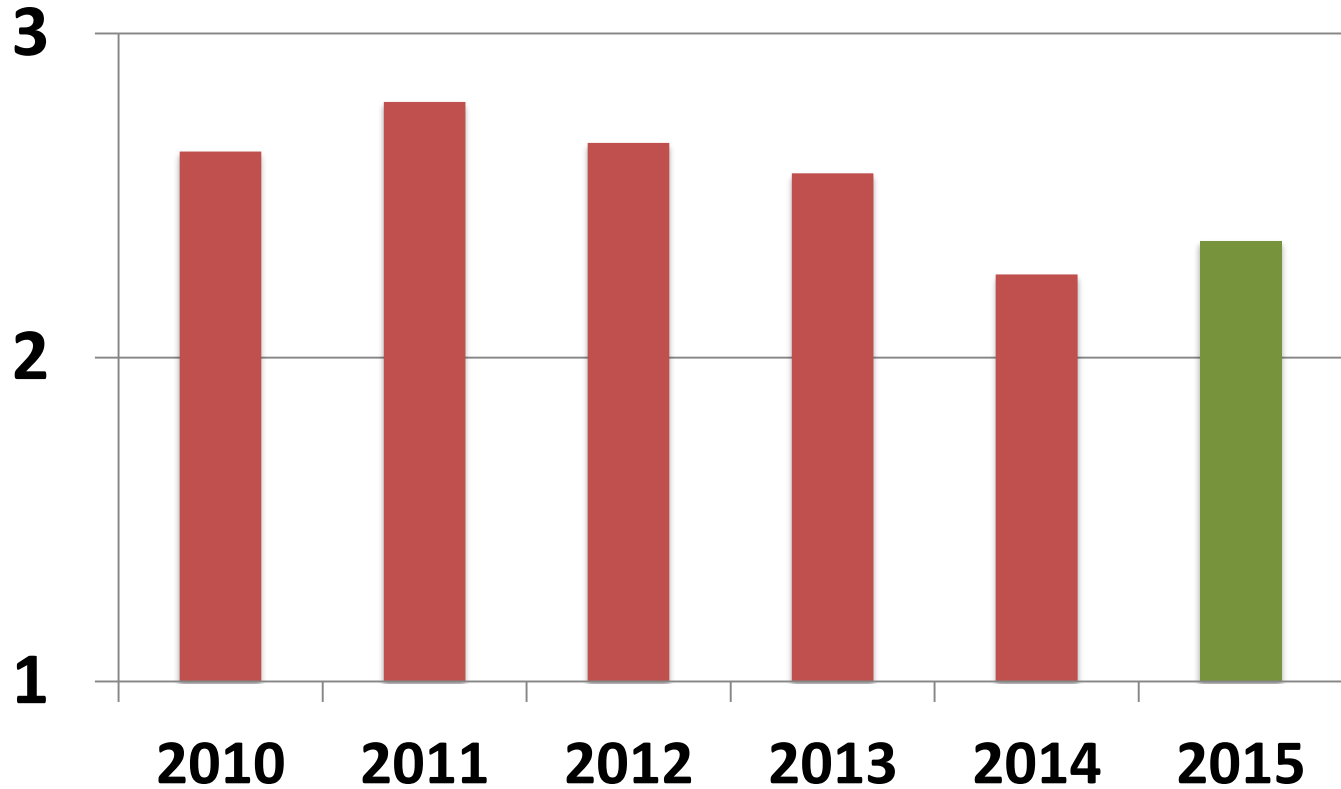
Body condition index in FALL



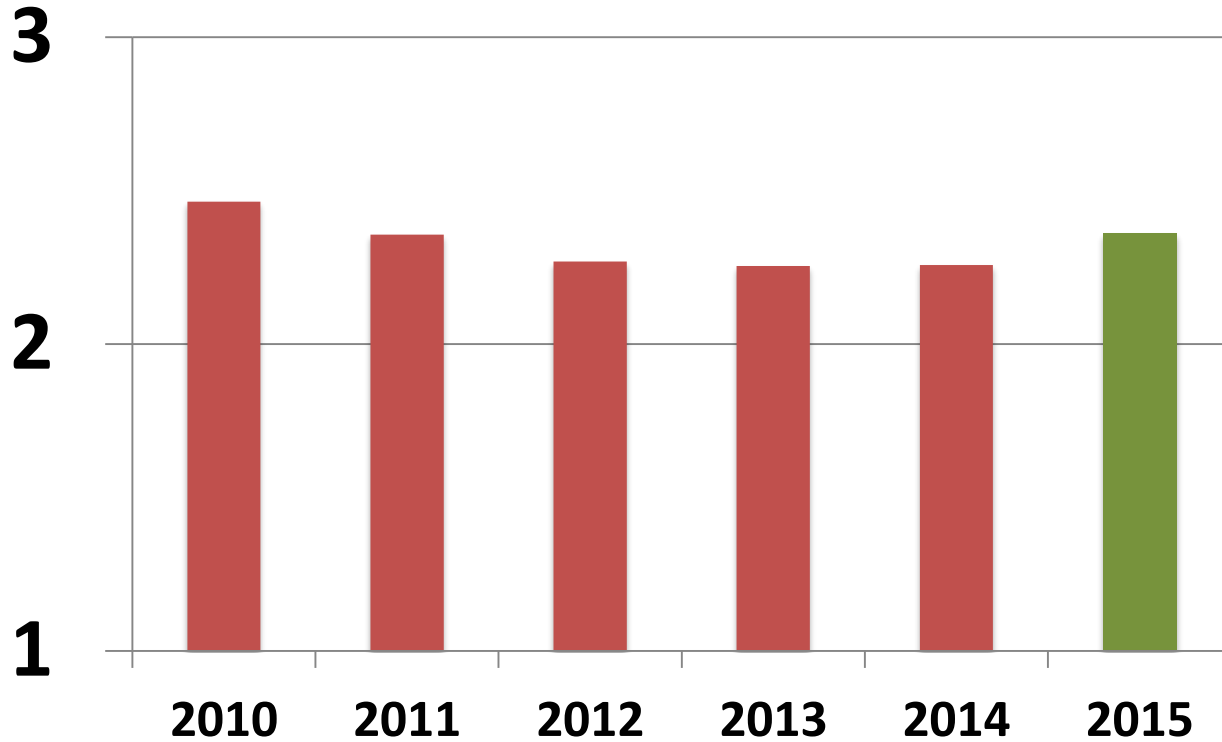
Body condition index in SPRING



BODY SIZE INDEX IN FALL



BODY SIZE INDEX IN SPRING



Summary of Findings

- Results consistent with a further population growth
- Higher spring and fall size index of caribou
- People that “met their needs” did not increase since 2006